

针织大圆机电控

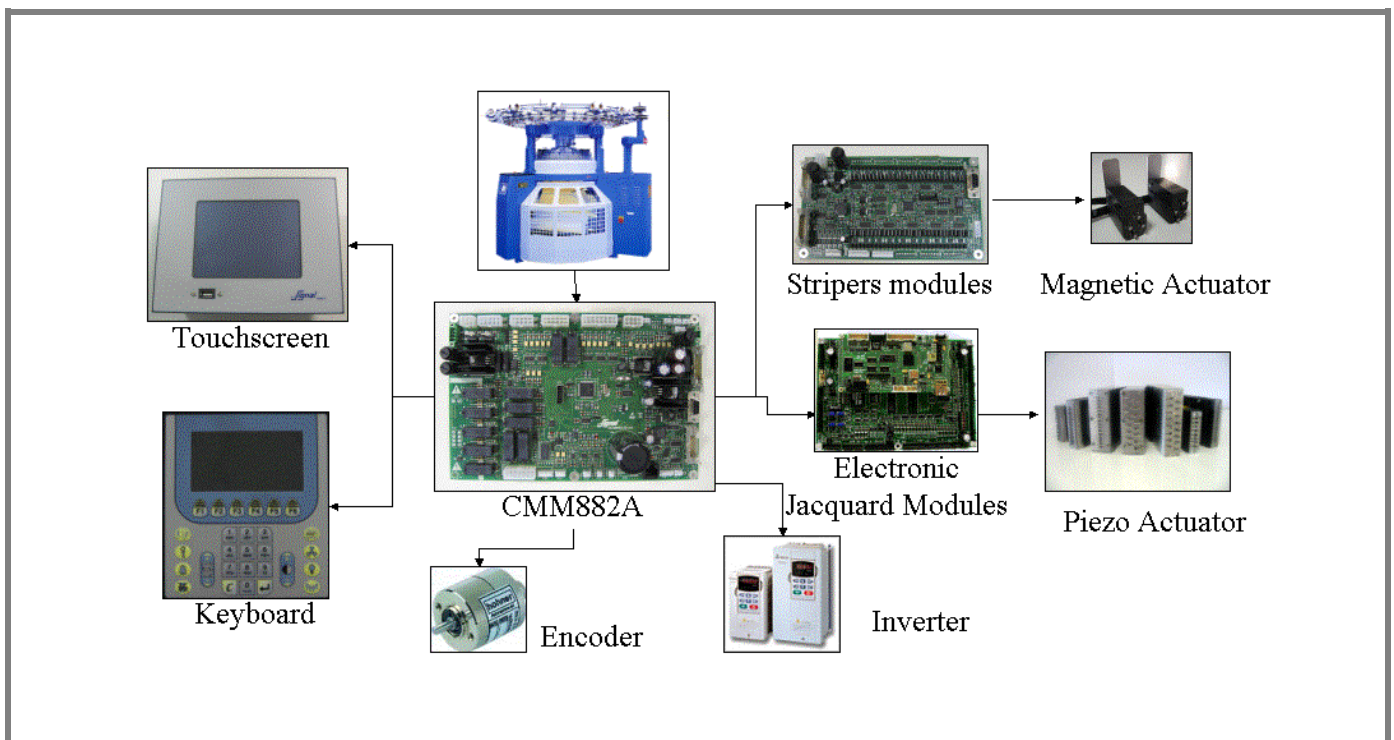
Circular knitting machine electronic controller

系统概述 System overview

此新型电控根据最先进的电子技术而设计，具有以下特点：

The new controller has been designed using the most up-to-date electronic technologies with the following aims:

- 具有高精密微处理核心，可以供目前所有款式针织大圆机使用，新技术符合当今纺织领域的发展趋势。High performance microprocessor core to satisfy all present knitting machines and all new technological trends of the textile field.
- 采用具有图案显示的大的花样显示器和手触界面，可简单，快速，有效的操作机器。Easy, quick and efficient programming of the machine due to a large graphic display with highly interactive icons and finger touch panel
- 具有高度的可靠性，可防止电磁噪音，坚固的结构可适合各种恶劣环境使用（温度高，潮湿，震动，电压波动）High reliability, high immunity against electromagnetic noise and rugged construction to operate in harsh environment conditions (heat, humidity, vibrations, mains fluctuations).
- 高水平的自我检测 High level self diagnostic
- 采用高集成电路板技术，减少了整个电控箱尺寸 High integration boards technology reduces the size of the complete controller.
- 多语言操作系统，包括许多东方语言（汉语，日语）Multi-language including the oriental ones (i.e. Chinese, Japanese)
- 减少连接线的使用，安装简单 Cabling reduction and easy installation
- 可在 CAN 和 SPI 线上通过不同的模块进行远距离的数据输入和输出 Remotable I/O by several kinds of modules allowable on CAN or SPI lines



系统描述 *System description*

➤ 基本功能

Base function

基本的电控包括以下部分

Base machine controller includes the following parts:

- 液晶显示屏，手触界面。显示操作图案。
LCD/Finger-touch panel with friendly user graphic interface based on interactive icons

- 主板控制机器功能:

Main board controlling machine functions:

- 显示和调节针筒速度
Display and regulation of cylinder speed
- 开始/停止/报警 Start / STOP / Alarms
- 灯/注油/风扇命令
Lights / Oiler / Fans commands
- 计件和移动管理 Piece counter and shifts management

➤ 变色功能

Stripers function

变色功能适合加到下面基本部分的模块上:

The stripers commands are available adding the following modules to the base parts:

- 变色电路板控制:

Striper boards controlling:

- 变色选针器的电磁铁输出
Solenoids outputs for striping actuation
- 控制变色位置的编码器
Encoder for striping positions control

- 变色选针器的电源供应模块

Power supply module for striping actuators

➤ 电子提花控制

Electronic Jacquard control

附加的电路板和电源板组合起来控制选针，具有以下主要特点

Additional high performance board and a special power supply unit provide the management of needles selection, implementing the following main features:

- 高度的可变性适合不同的选针系统，此系统可控制

High flexibility to comply with several types of needle selection systems. The system is able to control:

- 压电陶瓷和电磁铁选针器 (WAC, 西门子, MATRIX)

Piezoelectric ceramic and electromagnetic actuators (WAC®, SIEMENS®, MATRIX®)

- 单系统磁铁选针器

Mono-system magnetic actuators

- uLinux 基本操作系统

uLinux® based operating system

- 高水准的互接性(以太网, USB, CAN, RS232, RS485, 无线)

High level of interconnectivity (Ethernet, USB, CAN, RS232, RS485, Wireless).

- UPS 系统可在中断时储存织袜程序。Integrated UPS system for fabric saving in black-out event.

- 通过 USB 储存器驱动保存花样

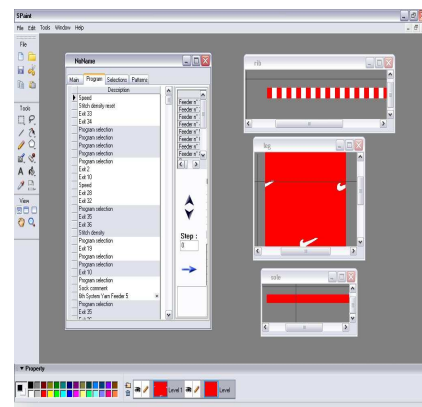
Pattern saving by USB memory pen drive

打版程序 *Patterns programming*

由特殊软件构成,可在

WINDOWS(2000,NT,XP,MILLENNIUM,98,VISTA)

Made with special software running under Windows® (2000, NT, XP, MILLENNIUM, 98, VISTA). Powerful graphics tools for easy pattern drawing (colors reduction, scale, import/export in various format).



Signal s.r.l. industrial electronics
Via Galvani, 6/F
25010 San Zeno Naviglio (BS)
ITALY
Tel +39 030.3512511
Fax +39 030.3539296

<http://www.signal.it/>

Signal Electronics (Suzhou) co.,Ltd
Block 6 Unit1, Linhu Avenue 1508,
Fenhu Economic Dev. Zone, Wujiang,
Suzhou, Jiangsu Province,
215211 CHINA
Tel +86 0512 81559033
Fax +86 0512 81559036

Signal is ISO 9001:2008 certified

鑫来尔电子(苏州)有限公司

苏州市吴江临沪大道北侧 1508
号腾飞临沪工业坊第 6 栋第一单元
邮编 215211
电话 +86 0512 81559033
传真 +86 0512 81559036

<http://www.signalchina.cn/>